

Instructions on How to Properly Fit Billy Bob's CMX® All-Fit Universal Iron Fitting System

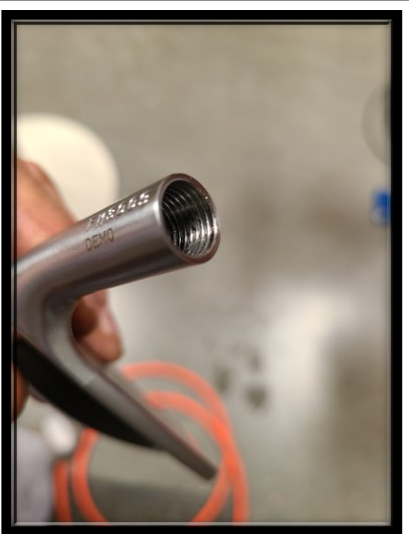


You Will Have 3 Items the Hosel Sleeve, the Shaft Sleeve, and the Ferrule Cap.



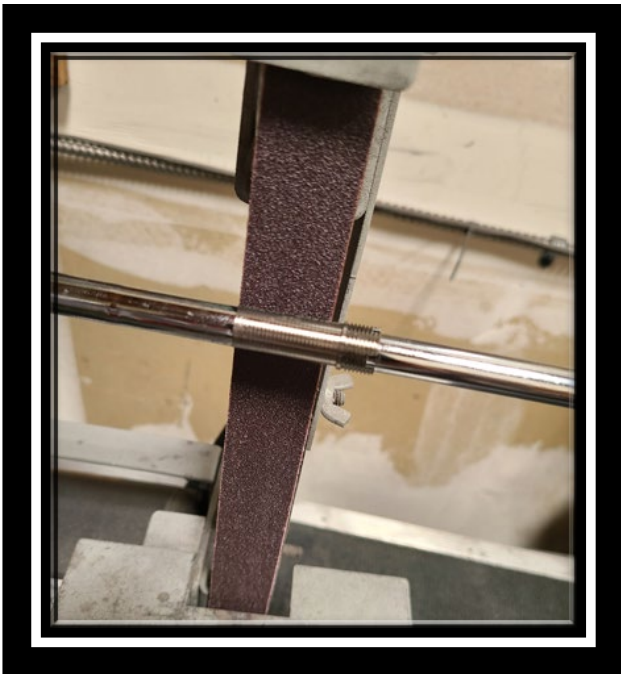
Drill the Iron Hosel with a Drill Bit Smaller than 7/16. This will make the Reaming much easier. Reamer Should Be .440 **Solid Carbide** Straight Fluted Reamer. Make sure your drill depth is at least 1.210".

This will assure that all the Shafts will fit into all the Heads with the same Length. Anything over will be ok, anything under will NOT be Ok.

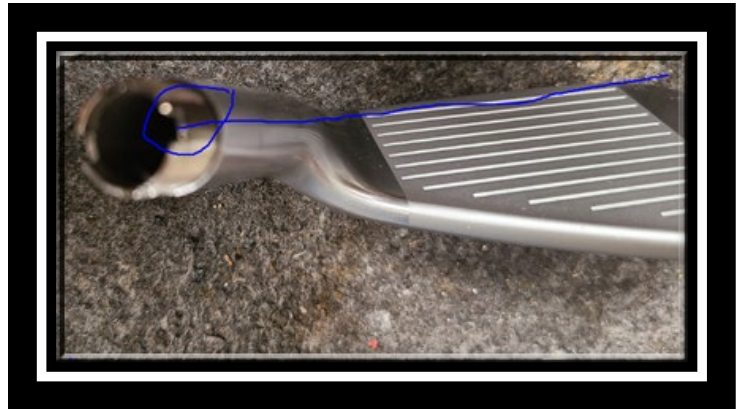


Once drilled and reamed to the Proper Depth you will need to Tap small grooves in the Hosel with a 7/16 Tap small threads and large Threads are just for Good gluing adhesion. The Epoxy I would Use **3M 810 Tan** the

best in the Industry, be sure there is no oil, and the bonding surfaces are clean and free of Debris.



Now You will Need to Abrade the Hosel Sleeve (the sleeve with threads on Top) this will fit in the hosel. Cut and Use an old shaft, slide it on the shaft so you have a solid section to Sand it with a 1X42 60 or 80 Grit sanding Belt. The material your sanding is Titanium and is Very Hard so score the sleeve so you will have good adhesion.



Now glue the sleeve in the prepped hosel and align the open slot to be even with the straight face of the club this will assure that all the shafts can be in the same orientation when changing Club Heads.



Next, we need to Prep the Shaft Sleeve and install it on the Shaft tip. Prepare the shaft tip the same as any and be sure to Abrade the inside of the sleeve with a Drill sanding sleeve or drill wire brush also will work.

Remember to slide the **“Threaded Ferrule on First Before you Epoxy”** the Shaft Sleeve.

Note* Buy a Carbide Reamer, you'll waste your money on cheap ones.

